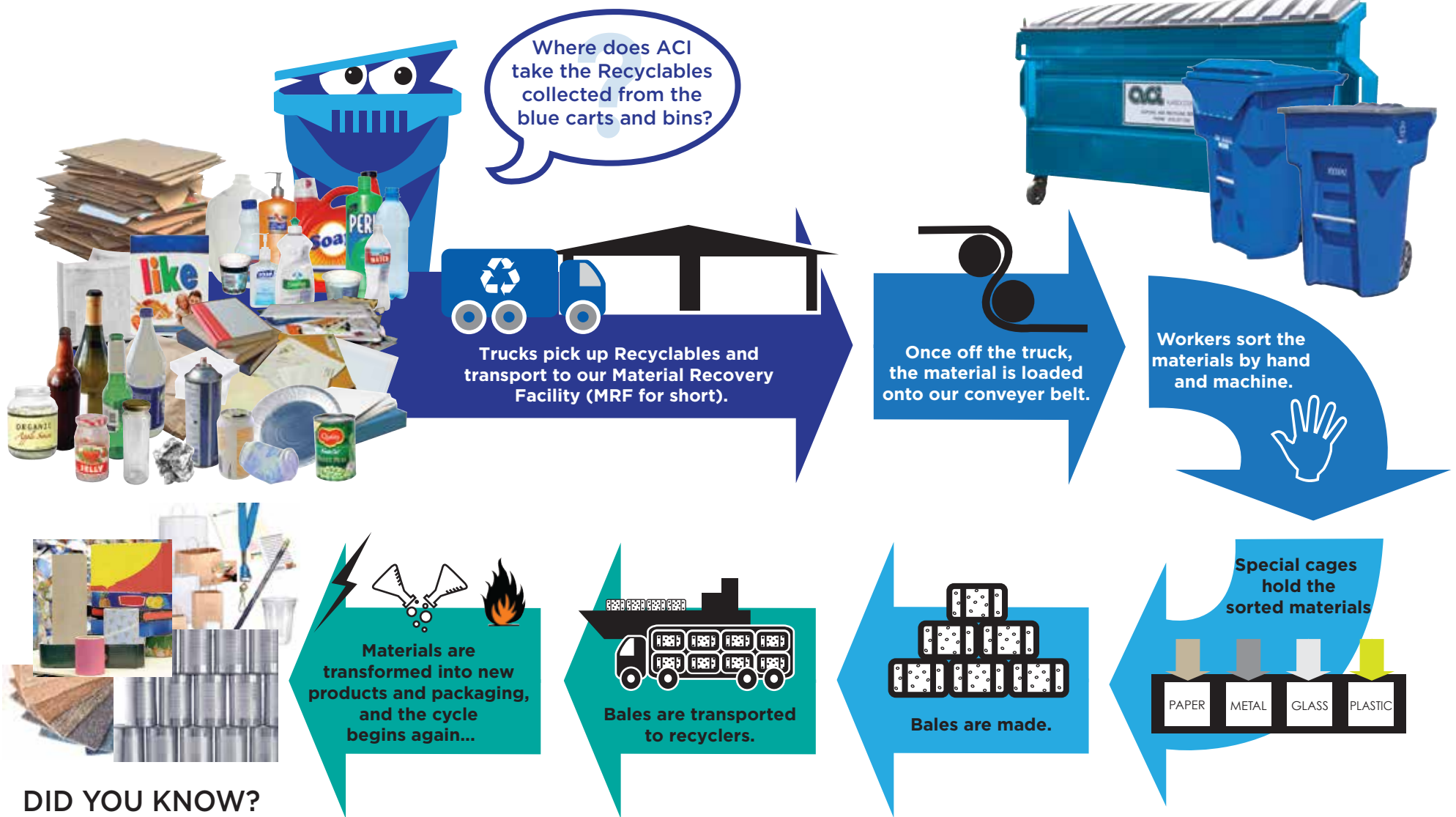


# What happens to your Recyclables?



## DID YOU KNOW?

- Recycling aluminum uses only 5% of the energy required to create aluminum from bauxite.  
Source: <http://alcoa.c2es.org/AluminumRecycling>
- Every ton of glass recycled saves over a ton of natural resources.  
Source: <http://www.gpi.org/recycling/glass-recycling-facts>
- Recycling plastic uses only 12% of the energy required to make plastics from raw materials.  
Source: [http://www.napcor.com/PET/landing\\_petrecycling.html](http://www.napcor.com/PET/landing_petrecycling.html)
- When new products are made from recycled paper instead of virgin wood pulp:  
Energy use is reduced by 64%. Water use is reduced by 50%. Air pollution is reduced by 74%. 17 trees are saved. 5 times more jobs are created.



**Alameda County Industries**

We are proud to be your service provider for **Recyclables, Organics & Garbage.**